

Undergraduate Schools

✿ School of Data Science and Management

- Department of Data Science and Management Since 2024



✿ School of Regional Design

- Department of Community Design Since 2016
- Department of Architecture and Urban Design
- Department of Civil Engineering and Regional Design



✿ School of International Studies

- Department of International Studies Since 1994



✿ Cooperative Faculty of Education

- Schoolteacher Training Course Since 1873



✿ School of Engineering

- Department of Fundamental Engineering Since 1964



✿ School of Agriculture

- Department of Frontier Food Science Since 1922
- Department of Innovative Science for Bioproduction
- Department of Environmental System Science
- Department of Ecological Socioeconomics



Graduate Schools

- Graduate School of Regional Development and Creativity

[Master's Course]

Division of Informatics

- Program-
- Information Science and Technology
 - Data Science
 - Management and Informatics



Division of Social Design

- Program-
- Community Design Studies
 - Agricultural and Rural Economics
 - Architecture and Building Engineering
 - Civil Engineering
 - Irrigation, Drainage and Rural Engineering
 - Global and Area Studies
 - Multicultural Studies
 - Studies on Community and Human Development

Division of Engineering and Agriculture

- Program-
- Optical Engineering
 - Molecular Agriculture
 - Material and Environmental Chemistry
 - Agricultural Biological Chemistry
 - Mechanical and Intelligent Engineering
 - Electrical and Electronic Engineering
 - Agricultural and Environmental Sciences
 - Forest Production and Conservation

[Doctor's Course]

Division of Advanced Transdisciplinary Science

- Program-
- Optics and Bio Design
 - Advanced Engineering Systems Design
 - Global and Regional Development Design

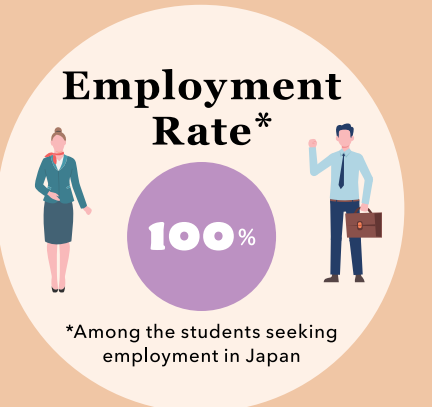
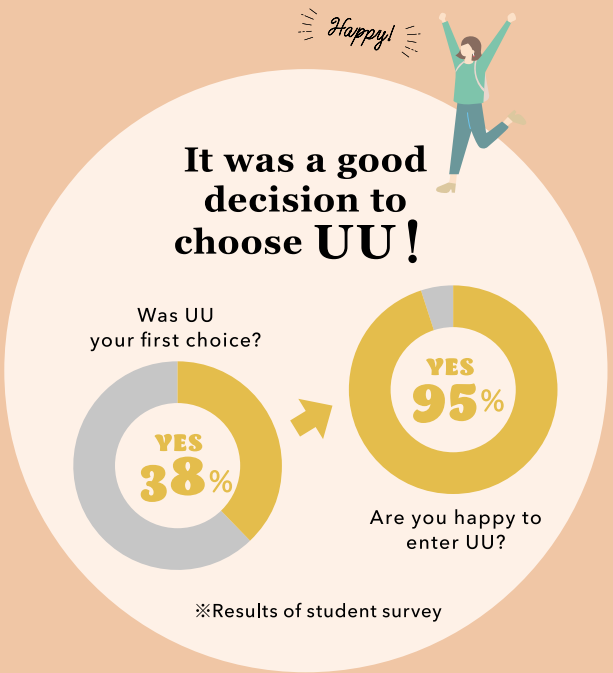
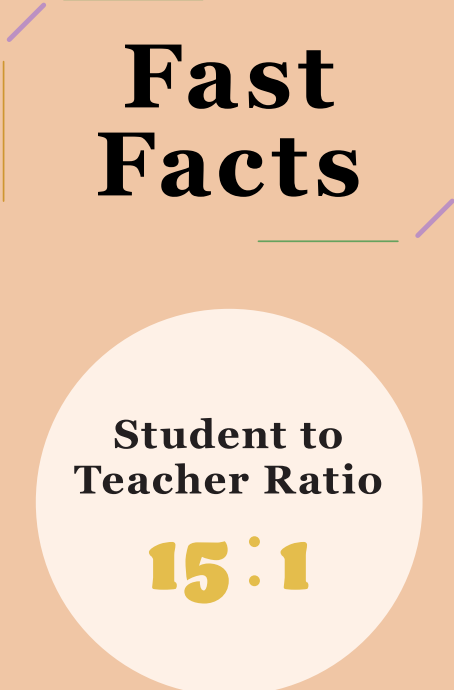
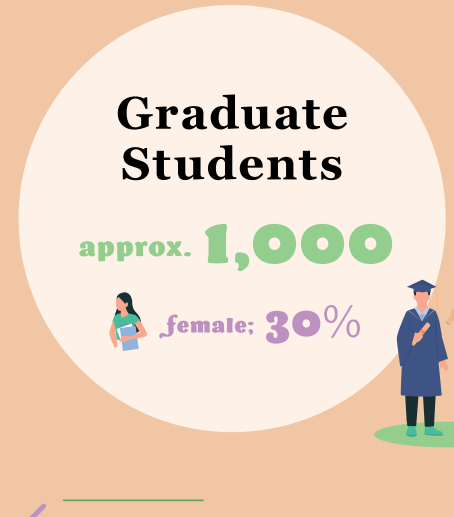
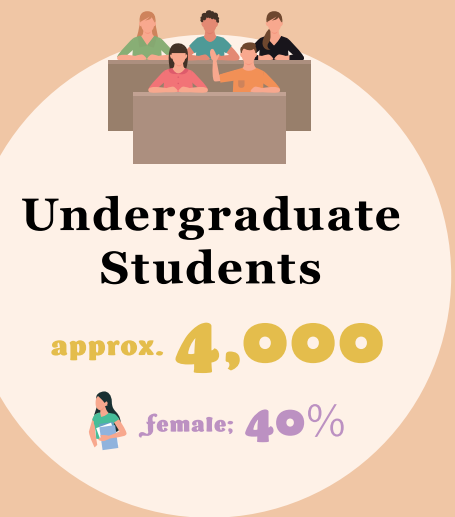


- Graduate School of Education

[Professional Degree Course]

- The United Graduate School of Agricultural Science, Tokyo University of Agriculture and Technology

[Doctor's Course]



Utsunomiya University

Overview



History

Starting from Tochigi Teacher College in the Meiji era and Utsunomiya Higher School of Agriculture and Forestry in the Taisho era, "Utsunomiya University" opened in 1949 as a newly established university. At that time, the university started with two schools: the School of Arts and Sciences and the School of Agriculture. In response to the changing times, four schools were established one after another. Utsunomiya University is the only national university in Tochigi Prefecture and now has six undergraduate schools and two graduate schools.



Motto

**Learning from the community,
giving back to the community,
and supporting each other as a center of
knowledge in the community.**

UU Spirit = "3C Spirit" + "3C Action"

3C Spirit: to create a bright future,
Challenge proactively
Change in response to the changing times
Contribution to society

**3C Action: for the university to cooperate
with the community and society,**
Connect proactively with society,
Commit responsibly to society, and
Collaborate with society in a multifaceted way.

Campus

Two Campuses of the University

✿ Mine Campus

**The main campus with nearly
100 years of history and tradition.
Seasonal appearances can be seen in all four seasons.**

Minegaoka Auditorium since 1924
Registered as a "Registered Tangible Cultural Property (building)" in 2017.
French Style Garden since 1926
Registered as a "Monument (Famous Place of Scenic Beauty)" in 2017.

State-of-the-Art Research Facilities

- Center for Bioscience Research and Education
- Center for Weed and Wildlife Management



Bio



Weed and Wildlife

✿ Yoto Campus

**In spring, rows of cherry trees
welcome new students.
LRT (Light Rail Transit) runs near the campus.
It is approximately 1.5 kilometers
from the Mine campus and only a 5-minute bike ride.**

State-of-the-Art Research Facilities

- Center for Optical Research and Education
- Robotics, Engineering and
Agriculture-Technology Laboratory (REAL)



Opt



REAL

Location



- 50 minutes from Tokyo by train (Shinkansen)
- 3 hours from Narita International Airport by bus or train

about Tochigi

Tochigi Prefecture is an attractive region with a good balance of rural and urban areas. Nikko Toshogu Shrine, designated as a UNESCO World Heritage Site, and Ashikaga Flower Park, famous for its wisteria flowers, are located in Tochigi. Tochigi also has a thriving agricultural industry and currently produces the largest amount of strawberries in Japan.



[Contact us at:] **Utsunomiya University**
350 Mine-machi Utsunomiya-shi, Tochigi 321-8505 Japan
+81-28-649-8172
uu-contact@a.utsunomiya-u.ac.jp



Website



Youtube